



ORTHODOX UNION KASHRUTH DIVISION

11 Broadway, New York, NY 10004
Applications Desk: 212-613-8249 Fax: 212-613-0749
E-mail: newapp@ou.org Online: www.ou.org

Application for
Kosher Certification

The Certification Process

I. What is kosher certification?

The OU symbol on your products or services indicates that their kosher status is being independently monitored by the staff of the Orthodox Union's Kashruth Division. That symbol is recognized by the kosher consumer as the sign that your products meet the strictest standards of kosher.

II. The Application.

Describe your company and its operations. The more we know about you, the more effectively and speedily we can process your application. The application includes:

A. Company Profile

It is with you that the primary certification agreement is signed. Please let us know with whom we will need to communicate. Describe your objectives, needs and goals.

B. Plant Profile

The maintenance of a kosher program requires the close involvement of production people. Let us know who is in charge of production, who orders and receives raw materials and who designs packaging materials. If the products intended for certification or those identical to them are made at more than one facility, we need to know about each production site. Please complete a Plant Profile for each.

C. Plant Raw Material Listing

If a product is to be considered kosher its ingredients need to be kosher. Kosher sensitive materials may be approved from specific sources only. Please identify the manufacturer for each item (the broker or distributor names may not be adequate). Other factors in the plant may effect the kosher status of the product. Are release agents kosher? Are other products on the same processing line kosher? What about other lines? Therefore, please provide a complete raw material listing for each facility. Mark with an asterisk () those ingredients not associated with kosher production.*

D. Product Approval Request

Tell us about the product(s) for certification. Do you wish to have the product(s) designated dairy, meat, pareve (neutral) or perhaps for Passover. The ingredient component list will help us determine if the product can be kosher and its designation. We'll need brand names. For Private Labels (your company's name does not appear on the label) please provide the distributor's name and particulars.

III. Initial Inspection and Evaluation.

Subsequent to a satisfactory review of your application, your facility will need to be reviewed by a senior field representative. The OU will pre-invoice your company for the costs associated with this inspection. His report will be reviewed by the Rabbinic Kashruth Commission. Pending their approval we will work to create...

IV. The Contract.

OU kosher certification is a partnership between the OU and the manufacturer or servicer to provide kosher products to the kosher consumer. Like any reliable partnership, a written agreement outlining the terms and provisions of the partnerships is essential. The contract is a list of standard clauses, certification fees and special clauses crafted to special needs or situations pertaining to your company's kosher program. The contract also includes two important Schedules.

A. Schedule A

Schedule A is a list of approved ingredients used in your facility. Generally this schedule is a composite of all raw materials maintained in the facility. In some circumstances we will approve non-kosher materials for non-kosher processes providing that those do not and cannot compromise the kosher status of the certified products.

B. Schedule B

Schedule B is the list of finished certified brands and products with their designations. OU for Pareve. OU-D for Dairy. OU-Meat for Meat. OU-P for Passover. This document will be reflected in the OU kosher certificate.

V. Re-Inspection and Certification.

Upon completion of the signed contract and payment of certification fees, the OU's designated Rabbinic Inspector will review compliance with the signed agreement. The OU will then issue its kosher certificate, and kosher production may commence. Your company's certification will be transferred from the New Company Department to an officially designated Rabbinic Coordinator on our staff. Your company will be reviewed periodically by the Rabbinic Inspector.

Our Commitment. We, at the OU, are committed to servicing the Kosher industry in a timely, efficient and professional manner. We appreciate your comments and welcome any questions.

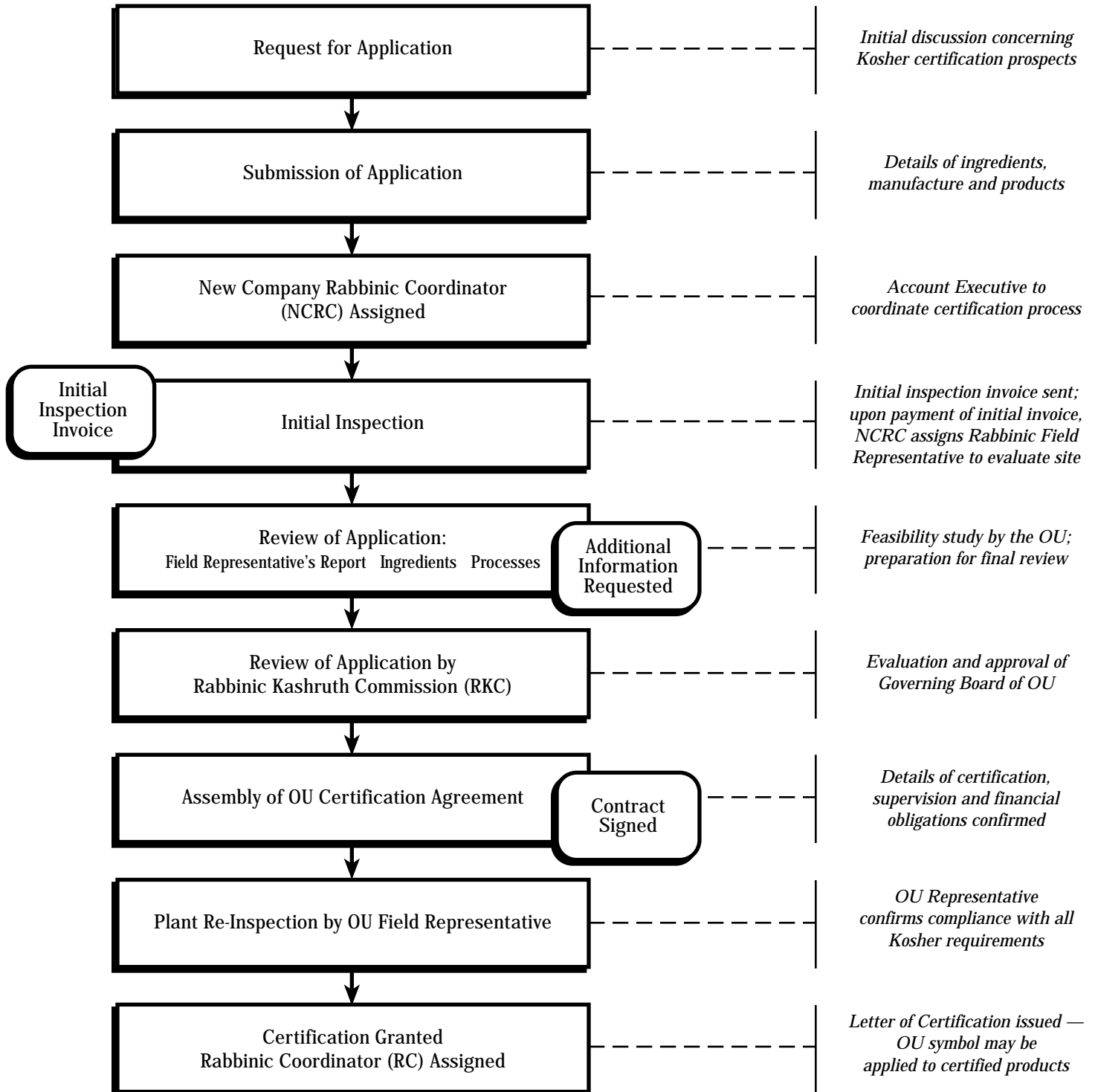


ORTHODOX UNION KASHRUTH DIVISION

11 Broadway, New York, NY 10004
Applications Desk: 212-613-8249 Fax: 212-613-0749
E-mail: newapp@ou.org Online: www.ou.org

Application for
Kosher Certification

The Certification Flowchart





ORTHODOX UNION KASHRUTH DIVISION

11 Broadway, New York, NY 10004
Applications Desk: 212-613-8249 Fax: 212-613-0749
E-mail: newapp@ou.org Online: www.ou.org

Application for
Kosher Certification

Company Profile

DATE:

Page ____ of ____

COMPANY

Address

City State Zip Country

Phone (800) Fax E-mail

Company Contact

Title Phone E-mail

Alternate Contact

Title Phone E-mail

Billing Contact

Title Phone E-mail

Marketing Contact

Title Phone E-mail

Company President/CEO E-mail

Please explain why you are seeking certification (i.e. what are your marketing goals?):

Under which category of foods would you list the product(s) (e.g. snacks, baked goods, acidulants)?

Have any of your products ever been certified Kosher?: Yes No

If yes, by whom:



Are any of them currently certified Kosher?: Yes No

If yes, by whom:

How many plants are included in this application? *Please attach a set of forms for each plant.*

FOREIGN APPLICANTS: *Please provide information for a U.S. office and/or contact, where available.*

PLEASE NOTE:

The  symbol is a registered trademark of the Orthodox Union. Its unauthorized use is a violation of trademark laws. Our rights in this regard are enforced to the fullest extent of the law. The  symbol may not be used until a written contract has been executed with the Orthodox Union.

The Union covenants and agrees that it will not communicate or divulge to, or use for the benefit of, any other person, partnership, association, or corporation, any of the trade secrets, formulae, or secret processes, used or employed by the company in or about its business, that may be communicated to the Union by virtue of this application. Submission and investigation of this application does not entail any commitment upon the part of the applicant or of the Orthodox Union in any way, until agreement for said purpose is duly entered into by both parties.

FOR INTERNAL USE ONLY

ID# Date Rec'd: NCRC PRC



ORTHODOX UNION KASHRUTH DIVISION

11 Broadway, New York, NY 10004
Applications Desk: 212-613-8249 Fax: 212-613-0749
E-mail: newapp@ou.org Online: www.ou.org

Application for
Kosher Certification

Plant Profile

DATE:

Page ____ of ____

Please complete a separate Plant Profile application for each facility.

PLANT

Address

City State Zip Country

Phone (800) Fax E-mail

Plant Contact

Title Phone E-mail

Alternate Contact

Title Phone E-mail

If the facility is not located in a major city, please indicate the closest major city and the distance to the facility:

Describe all the manufacturing process(es) in the facility:

Please use additional sheets if necessary.

NOTE: This form is intended for application of non-certified companies and/or plants. Certified companies seeking approval for new products should complete a New Product Request form.

FOR INTERNAL USE ONLY

MI F E

Approved by RKC Inspection Frequency

Special Comments

